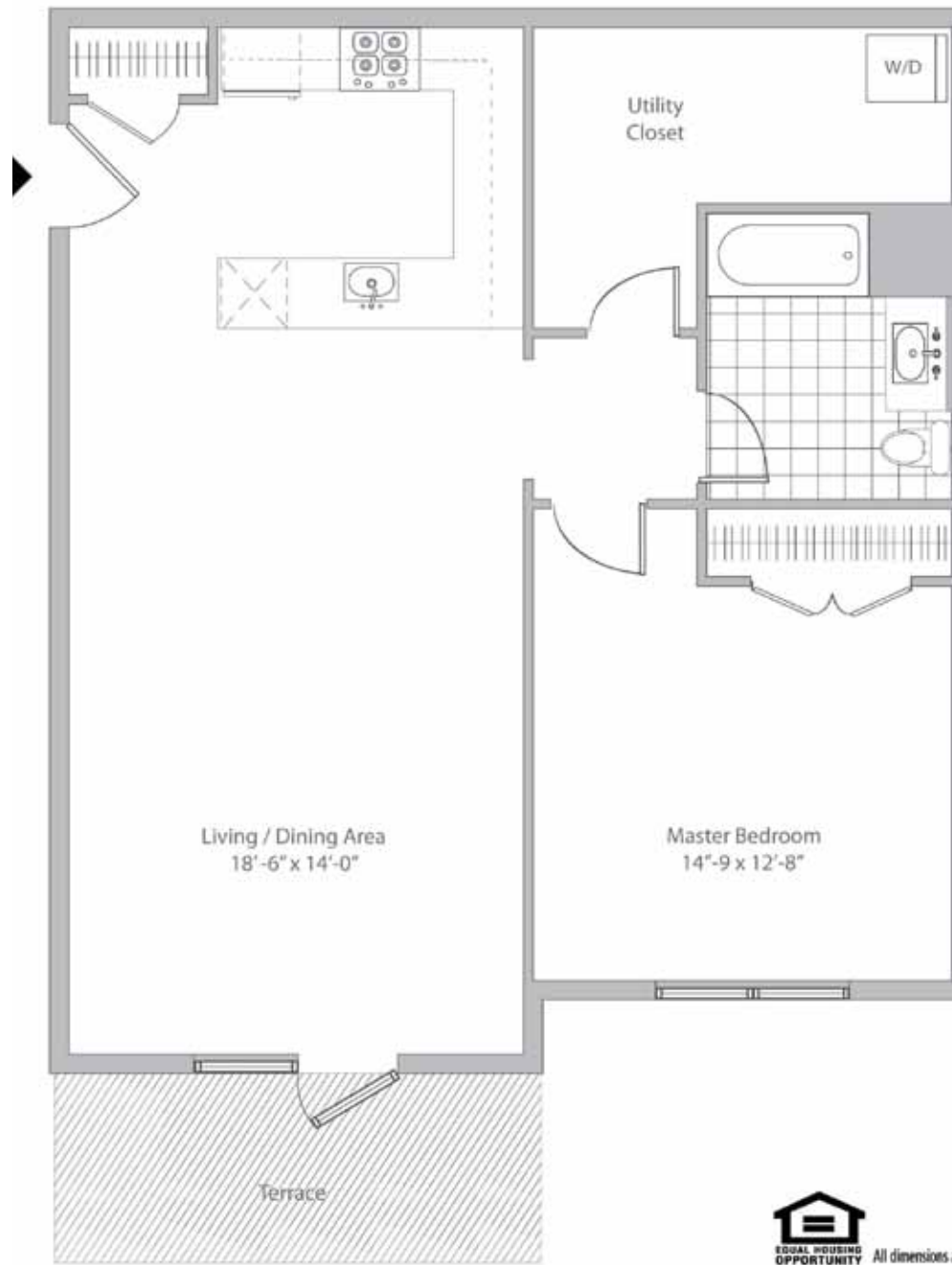




THE COVE

AT SPRINGFIELD

- Oversized Living Spaces
- Private Patios and Balconies
- Open Gourmet kitchens with Granite Countertops
- Stainless Steel Kitchen Appliances
- Hardwood Flooring and Ceramic Tile (Designer's Choice) Throughout the Kitchen and Living Room
- Plush Bedroom Carpeting for Year-Round Comfort
- Tiled Master Baths with Double Sinks
- In-home full-size Washers and Dryers
- Individual Heating and A/C Systems
- Private Garages
- Security Intercom Systems
- Elevators

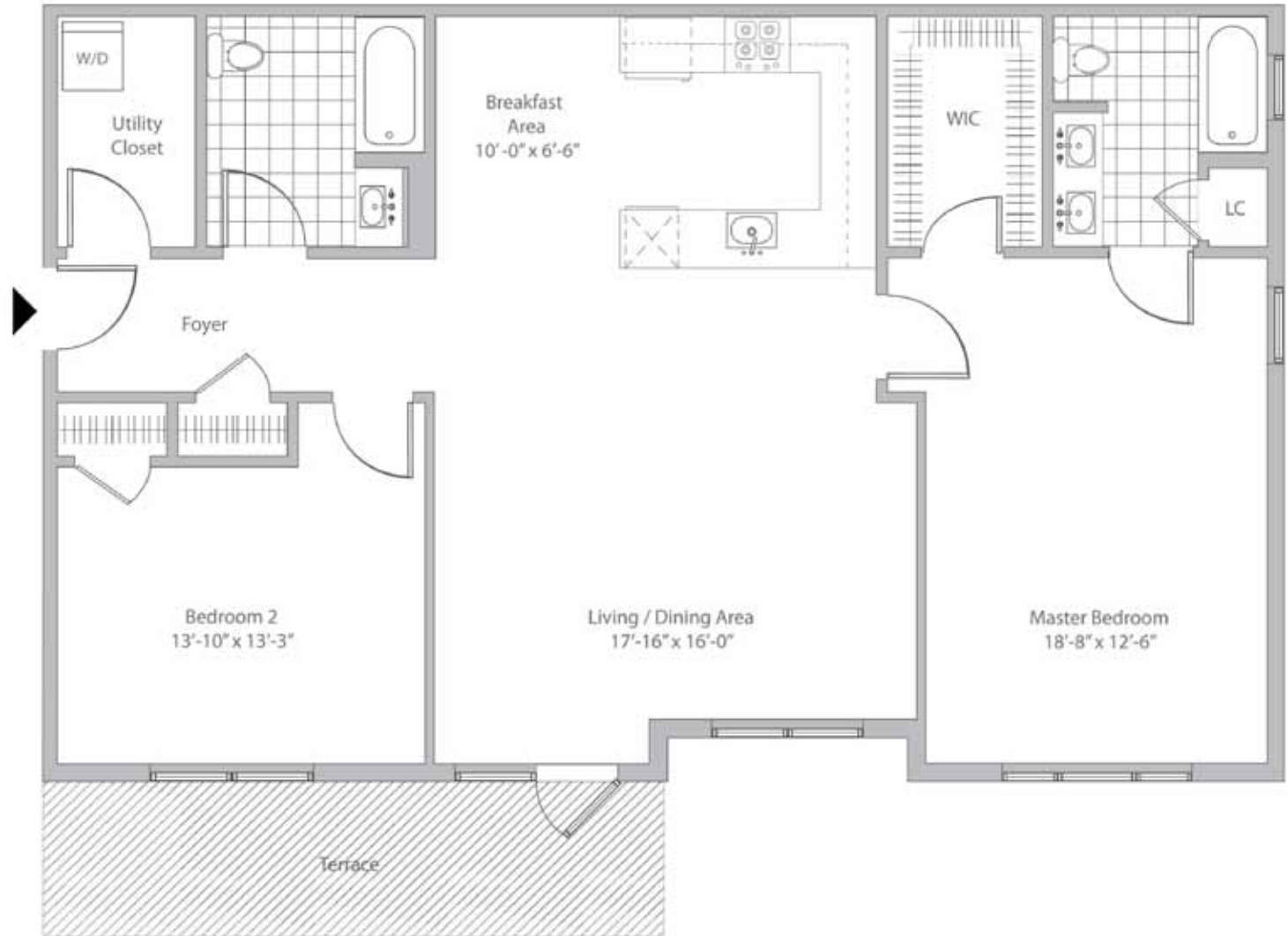


Equal Housing Opportunity. All dimensions and terrace sizes are approximate and subject to normal construction tolerances.



THE COVE

AT SPRINGFIELD



- Oversized Living Spaces
- Private Patios and Balconies
- Open Gourmet kitchens with Granite Countertops
- Stainless Steel Kitchen Appliances
- Hardwood Flooring and Ceramic Tile (Designer's Choice) Throughout the Kitchen and Living Room
- Plush Bedroom Carpeting for Year-Round Comfort
- Tiled Master Baths with Double Sinks
- In-home full-size Washers and Dryers
- Individual Heating and A/C Systems
- Private Garages
- Security Intercom Systems
- Elevators



Equal Housing Opportunity All dimensions and terrace sizes are approximate and subject to normal construction tolerances.